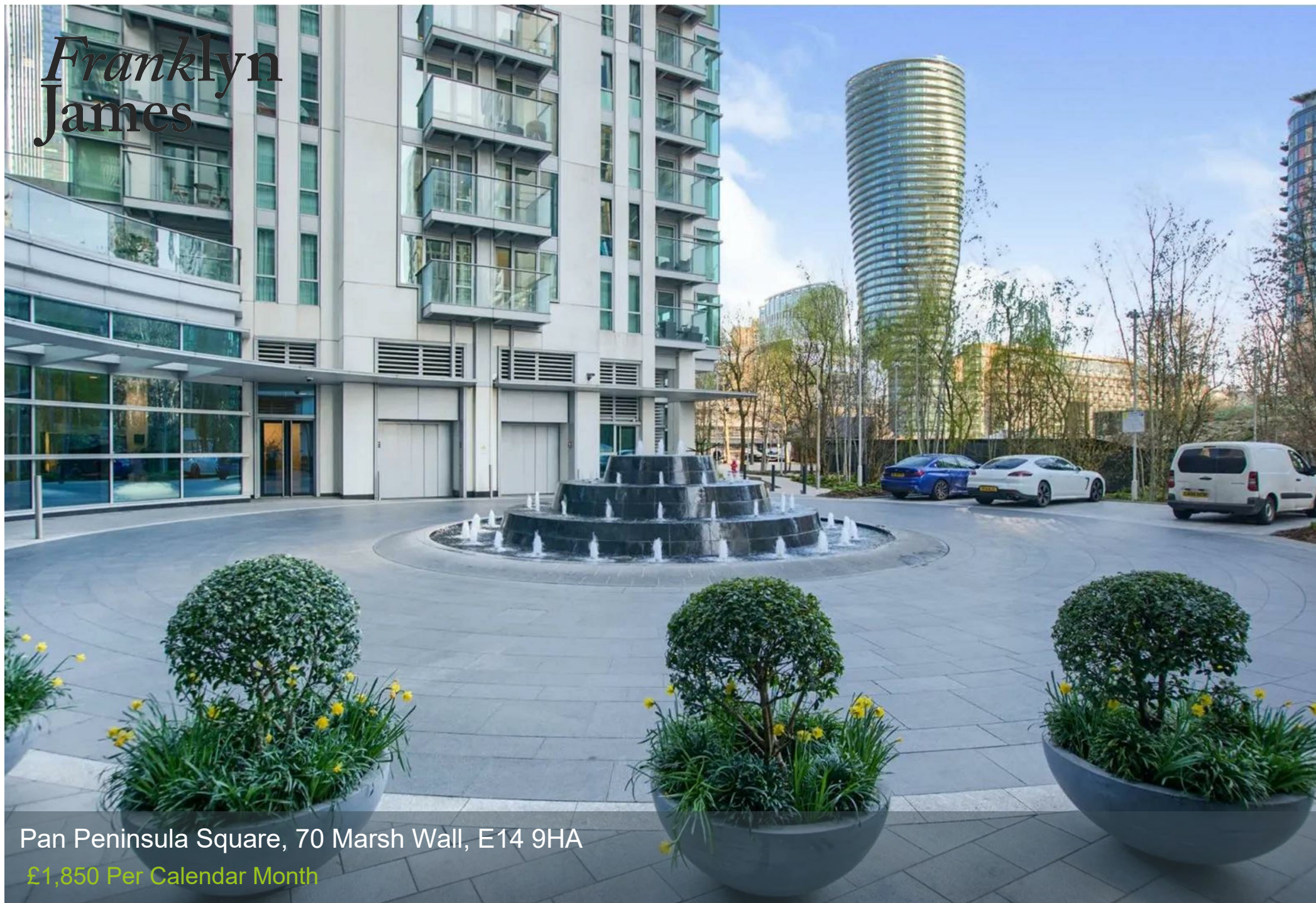


# Franklyn James



Pan Peninsula Square, 70 Marsh Wall, E14 9HA

£1,850 Per Calendar Month



Pan Peninsula Square, 70 Marsh Wall, E14 9HA

£1,850 Per Calendar Month

- Furnished
- Luxurious studio suite
- Floor To ceiling windows
- Renowned 48th floor cocktail bar
- Exclusive resident amenities, including gym and swimming pool
- Private cinema
- High specification finish
- Floor to ceiling windows
- Abundance of natural light
- Prime location just moments from South Quay DLR

EPC rating- C  
Tax band- E

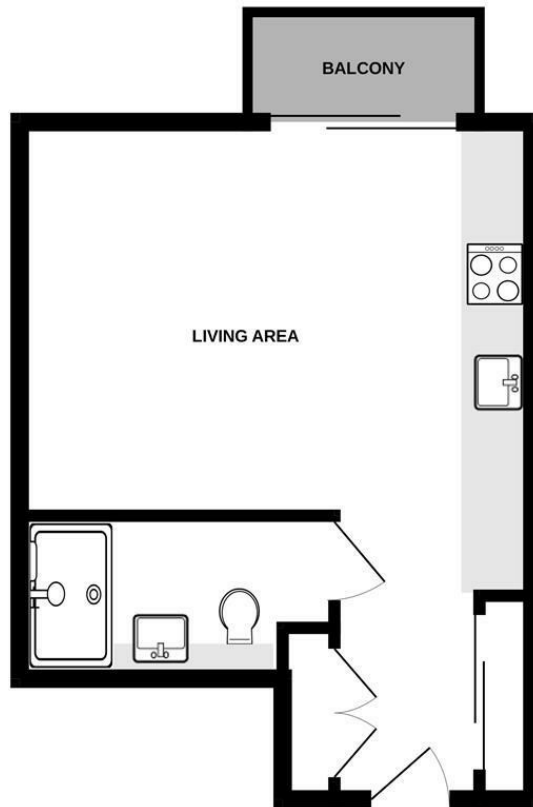


Located immediately adjacent to South Quay DLR, and a few minutes walk way from Canary Wharf gives Pan Peninsula unrivalled access to transportation, shopping facilities and work spaces.

Pan Peninsula enjoys a number of additional benefits for residents including a stunning gym and spa (including swimming pool, sauna and steam room), cinema and business centre. The development even has valet parking!

This luxury studio apartment has a fold-away bed allowing the full living space to be utilised during the day and providing the ability to entertain guests.

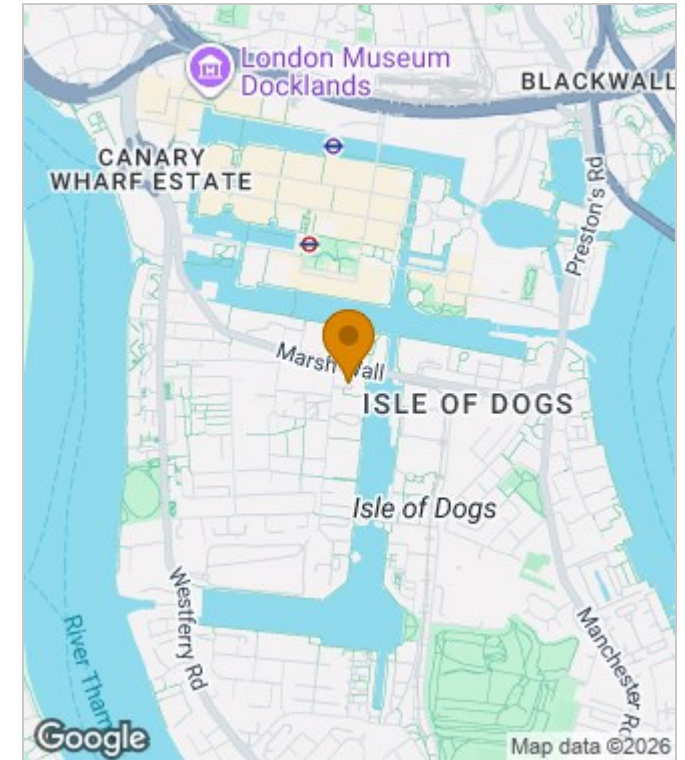
Other features include a high specification interior, luxury shower room and a private balcony.



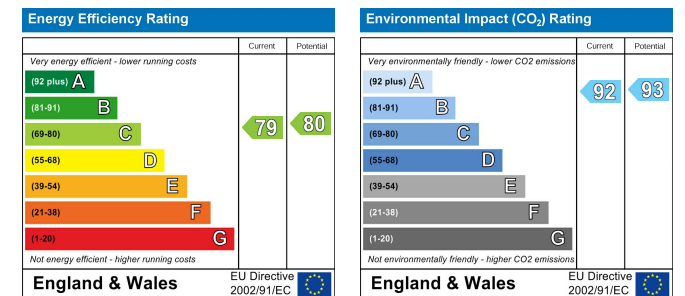
TOTAL FLOOR AREA : 321 sq.ft. (29.8 sq.m.) approx.

Whilst every attempt has been made to ensure the accuracy of the floorplan contained here, measurements of doors, windows, rooms and any other items are approximate and no responsibility is taken for any error, omission or mis-statement. This plan is for illustrative purposes only and should be used as such by any prospective purchaser. The services, systems and appliances shown have not been tested and no guarantee as to their operability or efficiency can be given.  
Made with Menepe ©2025

## Area Map



## Energy Performance Graph



These particulars, whilst believed to be accurate are set out as a general outline only for guidance and do not constitute any part of an offer or contract. Intending purchasers should not rely on them as statements of representation of fact, but must satisfy themselves by inspection or otherwise as to their accuracy. No person in this firm's employment has the authority to make or give any representation or warranty in respect of the property.

**Franklyn James**

29 Narrow Street, London, E14 8DP  
Tel: 02077911777 Email: [lettings@franklynjames.co.uk](mailto:lettings@franklynjames.co.uk) <https://www.franklynjames.co.uk>